

# FINE PAINTED WALLPAPERS

PAUL MONTGOMERY STUDIO

PAUL MONTGOMERY STUDIO

P.O.Box 976 CHURCHVILLE, VA 24421

1 . 5 4 0 . 3 3 7 . 6 6 0 0

WWW.PAULMONTGOMERY.COM



We at Paul Montgomery Studio have been creating handmade wallpapers and custom murals for over 35 years. We specialize in hand painted Chinoiseries and European panoramic murals.

Our Chinoiseries are characterized by delicate handpainted floral themes painted in centuries old techniques. Our European panoramics are painted in a style reminiscent of classic wood-block prints found in historic European houses. Each collection contains designs ranging from tropical views to nostalgic old world scenes and ornate gardens. Every design can be customized for the customer. We design everything for use as wallpapers, screens or framed art.

Our clientele include hotels, restaurants, clubs, and luxury residences. Our staff of talented artists pay scrupulous attention to detail and are committed to providing the highest level of quality and service with passion and integrity. We stress professionalism, excellence, and versatility.

Based in the Shenandoah Valley, inspired by Virginia's beautiful countryside, we create to enhance the world's interiors with exquisite murals.

For more information, please contact us:

*info@paulmontgomery.com*

Telephone: 1-540-337-6600  
Fax: 1-540-337-6966

Or visit us on the internet.  
*www.paulmontgomery.com*

We are also on Pinterest, Facebook, Google Plus, Twitter and we have a blog. Go to our homepage for links to each of our pages.

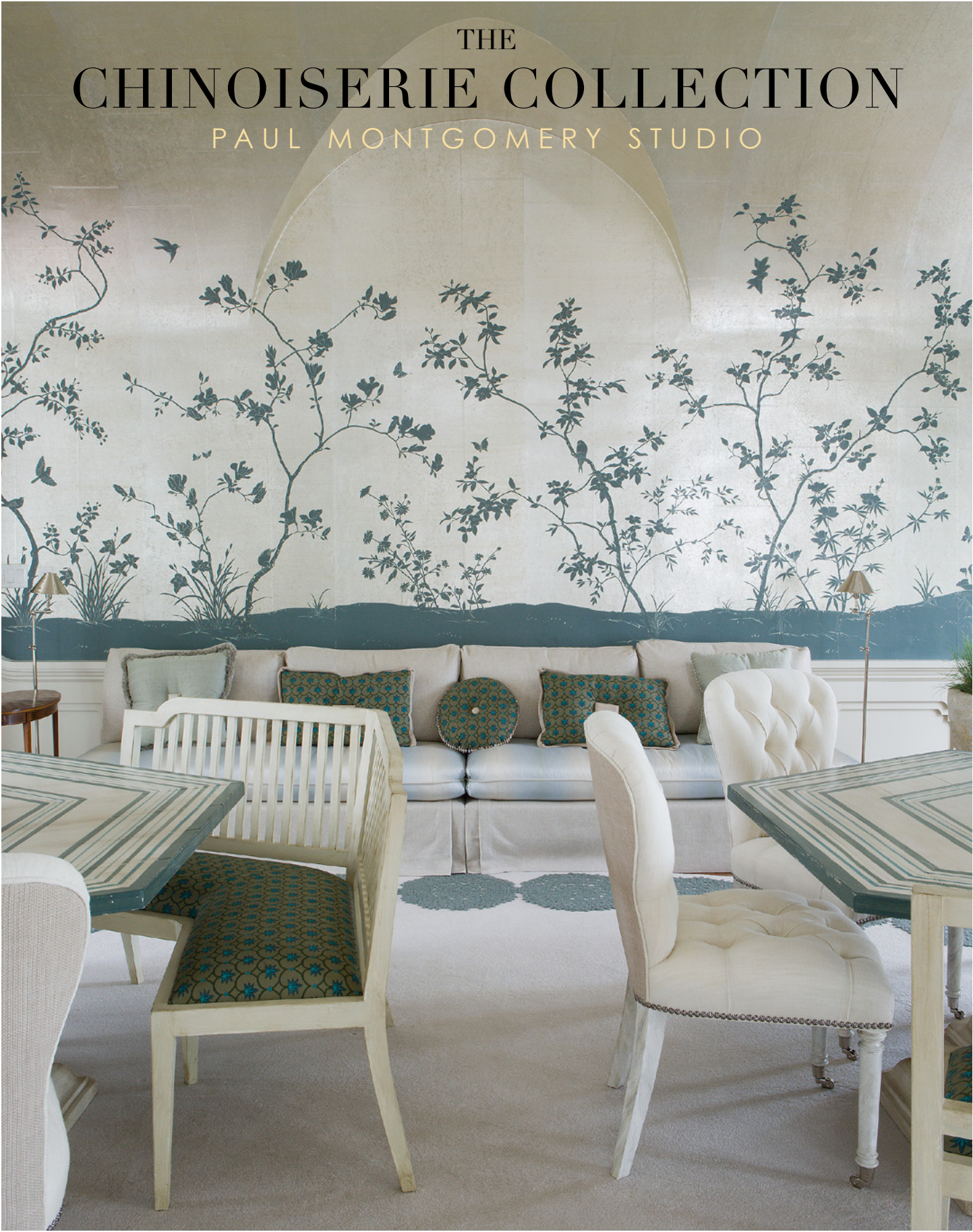
# FINE WALLPAPER MURALS

PAUL MONTGOMERY STUDIO

3	CHINOISERIES COLLECTION
13	ANTIQUITIES COLLECTION
15	PANORAMICS COLLECTION
21	SALONS COLLECTION
25	PANNEAUX COLLECTION
27	ORDERING PROCESS
29	FOUNDATIONS
31	HANGING INSTRUCTIONS
32	HANDMADE NUANCES
33	INSPIRATIONS







Fairington



Ashford Garden

WGC-118



Aspens

AF-100



Beauvais

BV-100



Calloway

WGC-205





Canton Garden

WGC-211



Chrysantha

CHR-100



Eden Flowers

EDF-100



Fairington

FA-100



Crane Grove

WGC-206



Dunmore

WGC-212



Gosford

GP-100



Greta

WGC-401





Halsing

HA-100



Hemmerling

HEM-100



Kew Garden

WGC-150



Longwood Garden

WGC-177



Huntington

WGC-241



Hyde Park

HP-100



Lotus and Koi

LK-100



Lushan Garden

WGC-231





Marlia

WGC-120



Orsay

WGC-125



Selby Garden

WGC-260



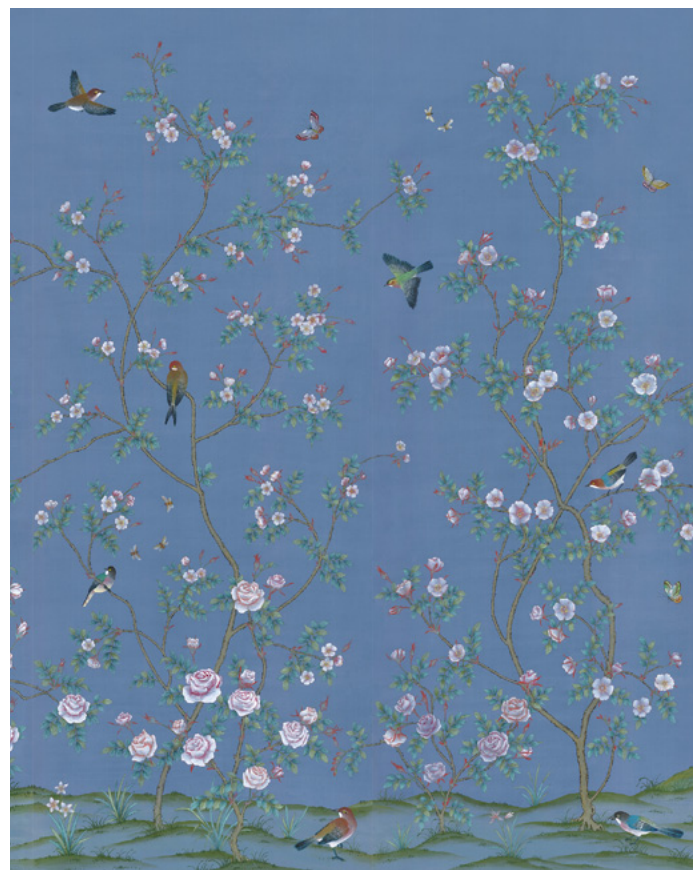
Suzhou Garden

WGC-142



Quiet Forest

QF-100



Rose Garden

RG-100



Taihu Garden

WGC-275



Tropical Forest

TRF-111





Tropical Garden

TRG-150



Tropical Landscape

T-012



Water Gets Warm

LT-100



Wilmington

WGC-203



Verlay

VER-100



Warrenton

WGC-204



Worthmore

WM-100

Example Room



Worthmore



# THE ANTIQUITIES COLLECTION

PAUL MONTGOMERY STUDIO



Town in Song Dynasty

AC-305



Porcelain Masters

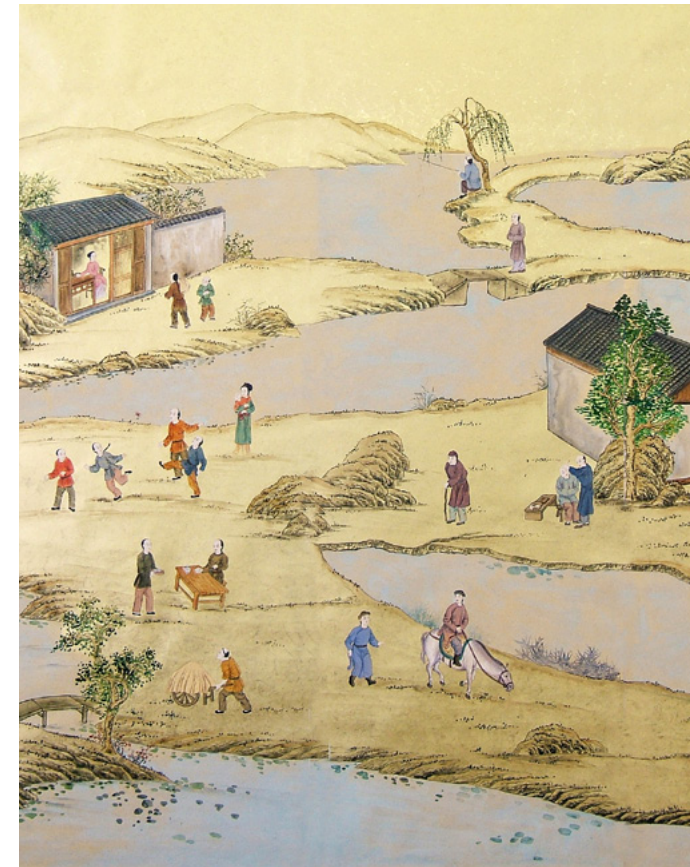
Nostalgic scenes of ancient Asia.  
Hand made using traditional techniques.



Porcelain Masters



Town in Song Dynasty



Country Life

AC-119



Meng Hui

AC-302



Old Canton

AC-300



Porcelain Masters

AC-301



# THE PANORAMICS COLLECTION

PAUL MONTGOMERY STUDIO



Palmera

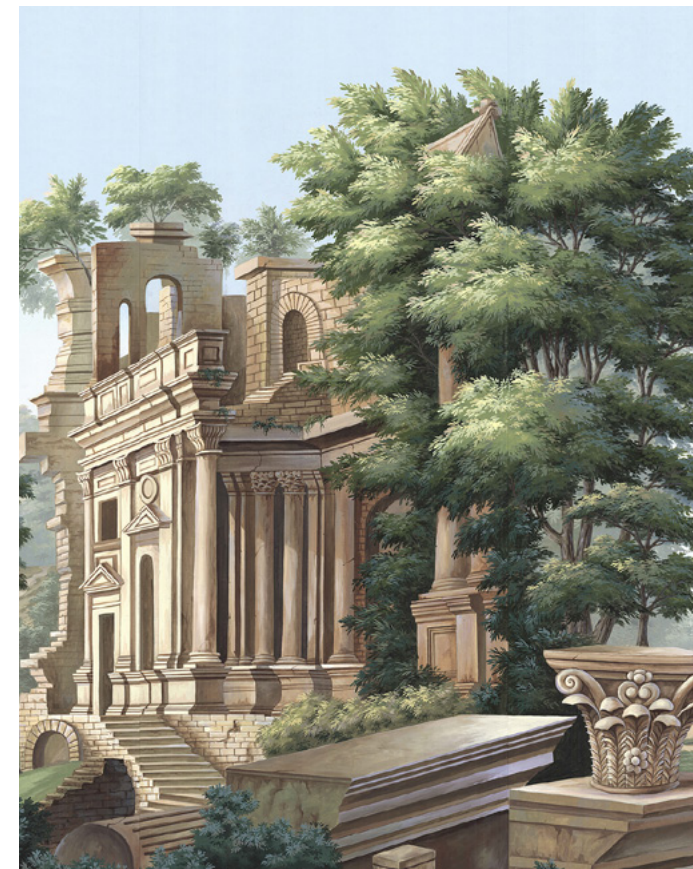


Tropical Views

Romantic views of landscapes far and wide. Hand made using traditional techniques.



Regatta



Bibiena

BIB-100



Dixie

DX-100



Pastorale

EP-100



Portobello

EP-013





Provençal

M-032



Regatta

REG-101



Tour du Monde

EP-034



Tropical Views

TRV-100



Seaport

SP-100



The Fox Chase

M-027



Views of Italy

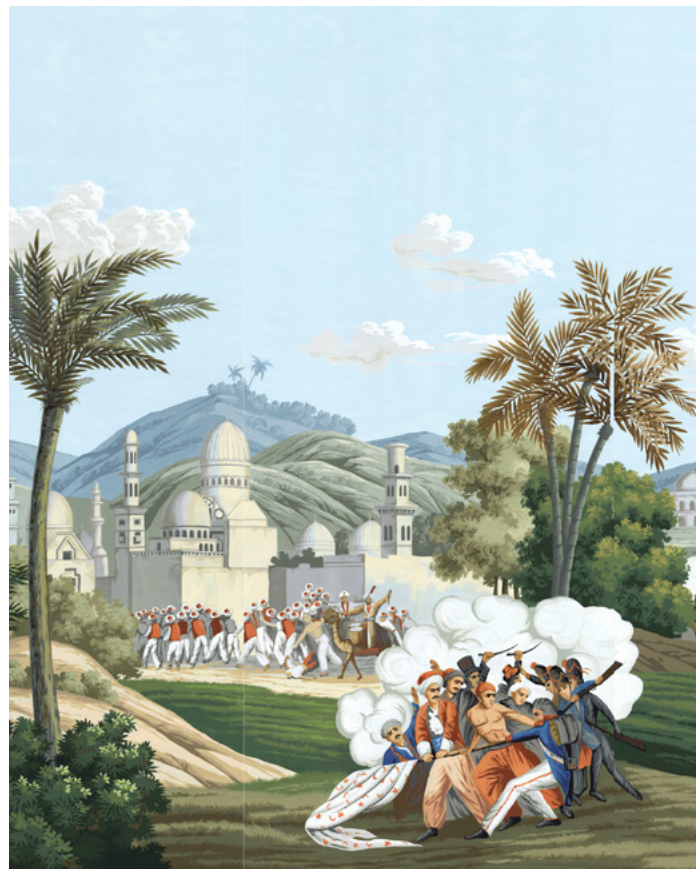
EP-006



Virginia

VA-100





Egypt

EG-101



Brésil

BRE-100

# EXAMPLE ROOMS



Views of Italy



Palmera



Palmera

PL-100



English Mural

EP-150



The Fox Chase



Portobello



# THE SALONS COLLECTION

PAUL MONTGOMERY STUDIO

Patterns inspired by  
nature's beauty.

Hand made using  
traditional techniques.



Summer Arbor



Summer Arbor



Bamboo and Birds



Bamboo and Birds

B-15-A



Bamboo in Mist

BIM-100



Birds in the Shade

TR-88



Brisa

BR-101





Clouds

CLD-100



Passiflora

PAS-100



Summer Arbor

SA-1



Trellage

TR-1



Pergola

PRG-100



Simona

SA-2



Vieux Lacqué

VL-1



Wisteria

WV-100



# THE PANNEAUX COLLECTION

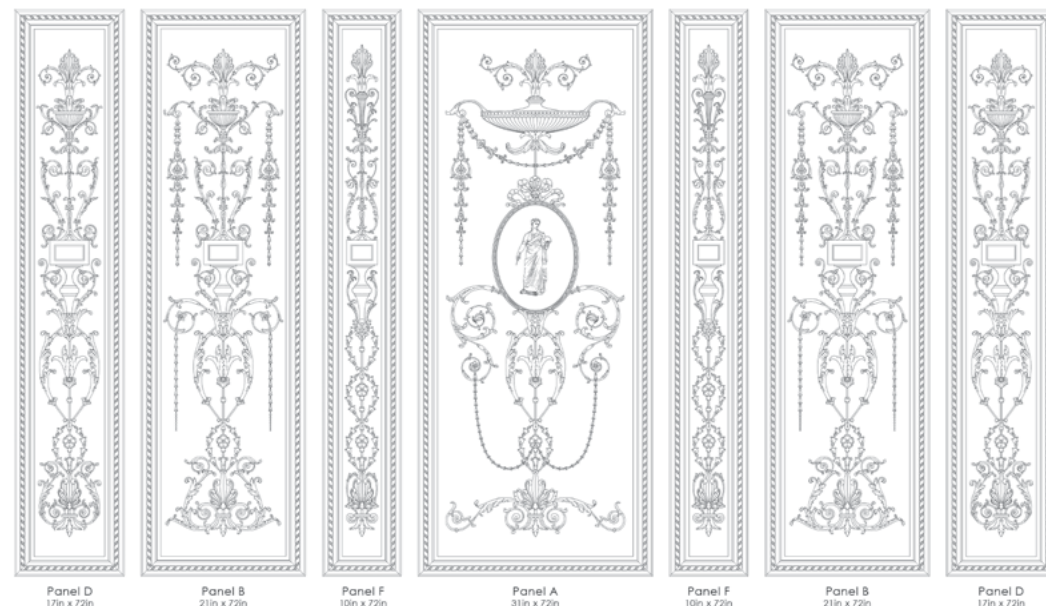
PAUL MONTGOMERY STUDIO



Woodham

Our newest collection of designs comprised of decorative panels.

Arrange panels to fit your room the way you want, or have us do it.



Delicato

PM-5003



Marbella

PM-5005



Thornhill

TH-100



Woodham

WD-100



1 SELECT A DESIGN

Select a design from one of our collections. Most designs are comprised of 20 consecutive panels to create a non-repeating mural 60 feet in length. Some designs have 10 panels before repeating, and some only 5. We can create more panels to continue your selected mural beyond our standard design configuration at additional cost.

Panels may be ordered in any sequence. You may start with panel number 1, or another starting point, moving from left to right in sequence (e.g. you require 5 panels, select 1-5 or 3-8, etc.).



2 SELECT A GROUND

The foundation of your wallpaper is one of the most important parts of the process, and we offer a variety of materials and textures to accomplish your vision.

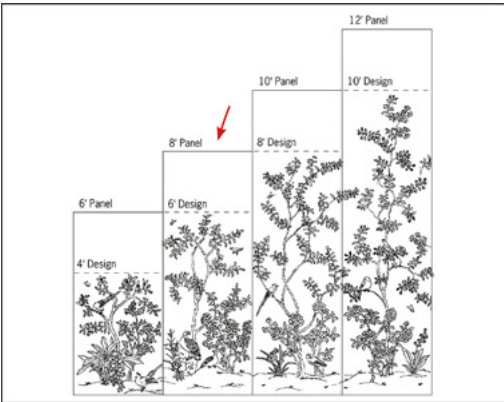
We offer paper-backed silk, Fang Kuai hand-pieced tea papers (FK), paper-backed metal leaf, and non-woven papers. All grounds are available in standard colors or may be customized to match your colors. We also offer special visual and textural effects for each ground. (see GROUNDS, next page)



3 SELECT A SIZE

We offer panels in standard heights, but each design is adjustable to meet wall heights. Each panel is 36 in. (91cm) wide after trim by installer. Standard panel sizes range from 4 ft. vertical design painted on a 6 ft. panel, to 10 ft. design painted on a 12 ft. panel. (see illustration to the right) Taller panels are available if required.

To determine the number of panels the project requires, simply add the horizontal lengths of your walls and divide the total by 36 in. For portions equaling less than 36 in., order a full panel. We will assist you with this.



4 RECEIVE YOUR SAMPLE

We suggest you order a 2' x 3' sample for a nominal fee. This will show how your design will look, including colors and scale of the finished product. If you have chosen custom colors, a sample for your approval is required. Samples are charged per sample. After you approve your sample we require that you return your it for color control during production of your order. There is no credit allowance for custom order samples. Samples are usually delivered in 2 to 3 weeks.



5 PLACE YOUR ORDER

Specify design name, panel size, number of panels, ground type and color, panel sequence and custom color requirements. Pricing is based on design type, ground type, special ground effects, and panel sizes. Standard painted colors of flowers, trees, leaves, etc. vary for each design and are created specifically to complement the silk ground colors. Panels may be ordered in standard sizes and colors or customized to meet your needs. For custom coloring of grounds and/or design elements, and adjusting panel heights or configuration, please provide color references and complete room dimensions. We will help you determine the number of panels required and provide a quote. See CUSTOM PROCESS below for information on further adjusting a standard design into a one-of-a-kind work of art.

Design diagrams are required for orders involving custom configuration around windows, doors, and design element adjustment. We require a 50% deposit to initiate your order. The balance payment is due prior to shipping.

6 DELIVERY

Paul Montgomery Studio requires 6 to 15 weeks for delivery, dependent upon the size of the order. Rush orders are accepted at an additional 25% of the total order cost. All quoted delivery dates are approximate. Paul Montgomery Studio cannot be held liable for delays in delivery due to circumstances beyond our control. Standard shipping is ground service by carrier in the USA unless otherwise requested and paid for by you, the customer. For more info, call 1-540-337-6600, or email info@paulmontgomery.com.



CUSTOM PROCESS

1 CREATIVE SERVICES

At additional cost we can adjust our standard designs or create unique designs based on a suggested theme. The cost is determined by the complexity and size of the design. We can develop any concept into a beautiful wallpaper, whether repeating pattern, traditional Chinoiserie, or classic European panoramic scene.

2 DESIGN DEVELOPMENT

Once we have your specifications, we will research the theme extensively, and create a design that harmonizes the your vision into decorative panel segments. Each panel is drawn in full scale and reviewed and adjusted by the artist. This process can take several months.

3 DIAGRAM DEVELOPMENT

It is your responsibility to submit complete room dimensions. Accurate measurements enable us to create a diagram in correct scale. When the completed diagram is presented for approval, it is the your responsibility to review all measurements and design elements and mark any necessary corrections.

4 COLOR AND EFFECTS

At this time the you will present color references and select a ground type. Standard silk colors can be used plain or with antiqued effect. We can also paint custom colors onto a variety of papers. (See GROUNDS, next pages)

5 SAMPLE DEVELOPMENT

Custom samples are hand painted in your specified colors and ground type. This 24" x 36" sample will represent the design in full scale and color. Revisions are made if requested, and new samples are made at additional cost. We require samples to be returned to insure consistent color and effect for production.

6 SPLENDID RESULTS

Though custom design generally takes a few months to complete, the results are always outstanding. We take pride in creating something completely unique by combining thoughtful, balanced design on beautifully textured surfaces.



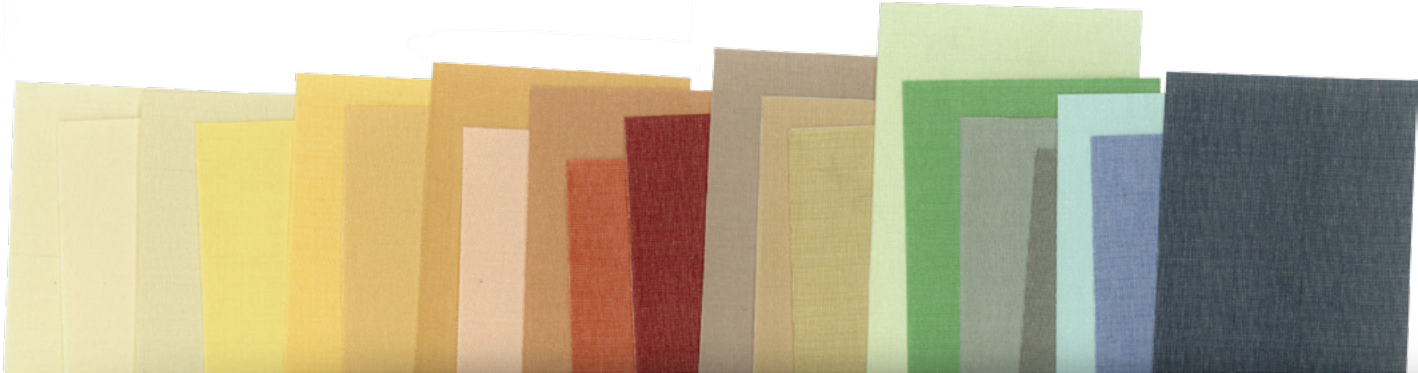
GROUNDS

We offer a wide variety of ground types and colors for our hand painted wallpaper panels. By combining color, texture and style in the ground that you choose, you can create a powerful effect that is truly unique. We offer four major ground types: paper-backed silk, Fang Kuai hand-pieced tea papers, non-woven papers, and paper-backed metal leaf. These grounds create beautiful backgrounds for our designs or as plain wallcoverings. All of our papers are made from natural, sustainable and renewable materials.

1 SILKS

Our silk grounds are the traditional option and by far our most popular paper paired with our many Chinoiserie designs. We offer different styles of colors: metallic, pearlescent, bright and subtle hues. Our colors can be used “as is” or with an added antique effect. Antiqued silks can show a shading effect between panels, called “paneling”, which exemplifies the hand crafted technique.

All of our silks are made from fine grade natural silk and are backed with rice paper. Silks are best used for creating a smooth elegance that complements the fine details of the hand painted techniques.



2 FANG KUAI (TEA PAPER)

Our unique hand pieced papers offer complex textures and can be painted in any color. Our FK tea papers may be antiqued and/or distressed to add a lovely weathered and aged character. Some of these papers contain natural fibers or flecks of gold leaf. As they are hand made, variations in piecing is evident and quite charming in its random occurrence. FK paper may be used by itself as wallcovering, or as the base of a beautiful Chinoiserie.



To see examples of these grounds in more detail, visit our website, [paulmontgomery.com](http://paulmontgomery.com), mouse-over the “Collections” drop down tab in menu, then click “Paper Grounds”.

Or, If you would like to hold a piece in your hand, please call 1-540-337-6600 or email [info@paulmontgomery.com](mailto:info@paulmontgomery.com) with your requested ground type.

3 NONWOVEN PAPER

Our lightly textured, non-woven papers are always custom-painted according to the customer’s instructions. These papers accommodate a variety of colors and painting techniques; from subtly antiqued matte finishes and painted special effects, to metallic and iridescent finishes. These papers are class A rated and are extremely durable and versatile.



4 METAL LEAF

Hand laid metal leaf foil backgrounds are classic and elegant. They are available in standard styles and colors or can be custom designed for your specific needs.

Design styles include small and large square grids, in single or alternating tones, small or large metal flecks, and overall even grounds. The colors of both the metal and the base beneath can be adjusted to meet your needs. We can customize metal leaf papers. Additional fees may apply, please call for information.





# HANGING INSTRUCTIONS

A deposit of 50% is required to initiate your order. Balance is due prior to shipping. Hand painting inherently ensures unique nuance between panels. Some touch-up by installer may be required. No returns are accepted for any portion of order unless authorized by Paul Montgomery Studio, including cut, damaged or installed portions. It is the responsibility of the customer to inspect the order for damages incurred during shipping, to report to courier prior to accepting delivery, and also to inspect order prior to installation. Authorized returns accepted for “stock” orders only. No custom color, custom design, or custom size orders will be accepted for return unless authorized by Paul Montgomery Studio. Custom design may be at additional cost, please inquire. There is no additional cost for custom color, but each strike-off incurs additional fees.

Note: Orders should be installed as soon as possible. Store in a cool, dry location. No claims for returns or refunds will be accepted after 30 days of receipt of wallpapers, as storage conditions are beyond our control and humidity and other conditions may affect the wallpapers.

## HANGING INSTRUCTIONS

### GENERAL

Inspect wallpapers before cutting. Also be sure there is sufficient material to complete the job. Matching of additional panels is not guaranteed after initial order is created. If it is suspected there will be insufficient material, stop installation in a corner. No credit will be given for unused wallpaper.

### WALL PREPARATION

All old wallpaper should be removed. Walls must be clean and smooth and should be prepared with good quality wall covering primer. Specific primer is at the discretion of installer. Allow the primer to dry thoroughly before hanging. Apply a lining where old plaster cracks or uneven surfaces pay be present.

### ADHESIVE

A clear, non-staining medium weight vinyl adhesive. *It is important to keep the face of the wallpaper free of adhesive.*

### HANGING

1. Lay out panels side by side and pre-trim as needed. All panels are 36 in. (91 cm) wide after trim by installer (about 1/4 in. to 1/2 in., 6 mm to 20 mm, trim is typical from each side). Change blades frequently. Some branches may not match exactly, but touch-up is easily achieved if desired. These are hand panted panels and the design usually lines up well, however, small discrepancies can occur. This is normal for a hand painted mural wallpaper and is not a defect nor is it reason to return goods. (See Pages 31 and 32)

2. If future removal is desired, a liner paper or muslin should be applied to the walls first.

3. Snap a level plumb line to start first panel, and work from the right side of a door or other straight edge, moving left to right, from panel #1 to #2, etc. Install each panel in sequence.

4. Use clear, medium weight vinyl adhesive. Using a medium amount, apply paste to back of the paper. The paper may be gently “booked” for a few minutes. *DO NOT CREASE*. Hold top corners to align left or right edge of panel with vertical line. Apply paper to wall using a smoothing tool or brush, working from the center of the panel outward. Gently push bubbles out with a plastic smoothing tool, working from the center. Silk is durable and will lay up evenly. *WARNING - Do not attempt to reseal the panel*. The traditional rice paper backing will melt and silk will pull from backing.

### MAINTENANCE

Periodic maintenance includes use of vacuum cleaner to remove dust. *NEVER USE WATER TO CLEAN*. Spots should be removed by using a soft gum eraser or should be picked very delicately with a sharp instrument such as a razor blade. Most grease stains will permanently disfigure the surface of this material.

### SEALING

The wallpaper may be lightly spray coated with a clear matte acrylic protective coating if needed. Do not dip paper into any soluble solution or saturate wallpaper surface.

### INSTALLING “FANG KUAI” PAPERS

These papers are pieced together using traditional methods and are painted with water-soluble paints. Extra care should be taken with the FLAT FINISH painted versions to avoid getting the surface wet. Satin and gloss finishes are also available and improve color fastness. You can gently “book” the paper, but do not crease it. Do not let paper rest for more than 3 minutes; backing may delaminate. Follow the above instructions (Step #4), but use a smoothing brush instead of a plastic smoothing tool. Do not get surface of the paper wet as paint may run.

### INSTALLING “TNW” PAPERS

These papers are Class A rated non-woven and are the easiest to install. Follow instructions above.

### DISCLAIMER

Upon request, we will provide sample pieces for test hanging. Installers have their own methods of installing, and these instructions are for suggestion only and no claims will be accepted for inadequate or faulty installation based on these suggestions.

# HANDMADE NUANCE

We are often asked about the misalignment or paneling effect that one may see in hand painted wallpaper murals. Below are four very well-known classical murals that illustrate the very phenomenon being addressed. As you may notice, seams are visible to varying degrees. One should not consider this a blemish that detracts from the validity or merit of the artwork, but as a nuance inherent to the nature of hand-crafted wallpaper. This method of painting has been practiced for hundreds of years, and has not strayed from tradition.

Although our artists make every attempt to paint the individual panels in the most excellent manner, sometimes the hand painting process results in imperfections. We do not consider these imperfections at all to be a detriment to the art work.

We hope that through this illustration we may dispel any myths of idealized “perfection” in our product and that it will be informative and helpful to our customers who purchase our lovely works of art.



Hand-painted produces “imperfections” Our Design “Hyde Park” - Chinoiserie Scenics Collections



Hand-painted Antique Effect produces “paneling” Our Design “Aspens” - Chinoiserie Scenics Collection



# INSPIRATIONS



Verlay



Kew Garden



Gosford



Warrenton



Worthmore



Kew Garden



Portobello



Dunmore



Marlia



Fairington



Thornhill



Woodham



Passiflora